



## CLASS HONOR ROLL

### 2006-2007



*The Penn Fund is the University's unrestricted annual giving program for undergraduate education.*

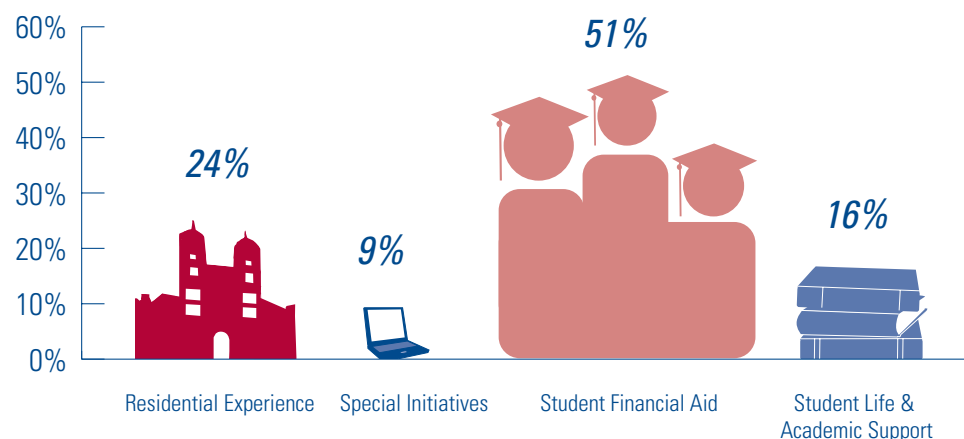
The Penn Fund is defined by the consistency and generosity of its Proud Penn Donors. Annual giving from alumni holding undergraduate degrees allows The Penn Fund to make an instant impact on the lives of Penn students.

It is the dedication of Penn alumni to continuing this mission that has made The Penn Fund a successful annual giving program. In 2007, donors led The Penn Fund to a record-breaking year with over \$24,095,414 raised from 27,072 donors. This remarkable support is crucial to the advancement of Penn and its students. The Penn Fund eagerly looks forward to our next fiscal year and to breaking even more records with the support of our Proud Penn Donors – both new and old!

*Every donor, every gift, every year* are crucial to the success of The Penn Fund, as well as the University of Pennsylvania.

## What Does The Penn Fund Support?

Your gifts have an impact on the lives of Penn's current undergraduate students. The following chart illustrates how Penn Fund gifts are allocated.



## Penn Fund A-Z

The Penn Fund supports all aspects of undergraduate education at Penn. Every part of a student's education – A through Z – is made possible by gifts from alumni and friends like you.

- |                            |                                |                             |
|----------------------------|--------------------------------|-----------------------------|
| <b>A</b> dvising services  | <b>J</b> oint degree programs  | <b>S</b> cholarship aid     |
| <b>B</b> ooks              | <b>K</b> nowledge sharing      | <b>T</b> echnology          |
| <b>C</b> lassrooms         | <b>L</b> aboratories           | <b>U</b> pgrades to campus  |
| <b>D</b> ining facilities  | <b>M</b> ulticultural clubs    | <b>V</b> isiting professors |
| <b>E</b> xhibitions        | <b>N</b> eighborhood relations | <b>W</b> ireless internet   |
| <b>F</b> aculty            | <b>O</b> verseas studies       | <b>X</b> erox machines      |
| <b>G</b> eological gardens | <b>P</b> ublications           | <b>Y</b> earbooks           |
| <b>H</b> ousing            | <b>Q</b> uiet rooms            | <b>Z</b> ealous studies     |
| <b>I</b> nternships        | <b>R</b> esearch               |                             |

### The Penn Fund Executive Board (2006-2007)

Stacey Rosner Lane C'80  
*Chair*

Brett H. Barth W'93  
*Vice Chair*

Mandee Heller Adler C'94, W'94

Darren M. Fogel W'93

James J. Fuld, Jr. W'69

Lisa Gottesman W'78

Shannon Hedvat ENG'07

Michel T. Huber W'53, ASC'61

Robin Harrison Kaplan C'91

Beth M. Kean ENG'89

Eric H. Morgenstern C'84

Jason M. Pantzer C'93

Stephen M. Rabinowitz C'80

David L. Rosenberg W'78

Christopher L. Shoemaker W'91, WG'97

Patricia Braun Silvers CW'72

David E. Simon, W'95 WG01

Sanford R. Simon W'56

Bettyruth Walter CW'55, G'77, GR'85

Jill Topkis Weiss C'89, WG'93

Arthur M. Wrubel W'87

The Penn Fund  
601 Franklin Building  
3451 Walnut Street  
Philadelphia, PA 19104-6285

(tel) 215-898-8445 or 800-237-2655

(fax) 215-573-0197

(e-mail) [pennfund@ben.dev.upenn.edu](mailto:pennfund@ben.dev.upenn.edu)

(web) [www.alumni.upenn.edu/pennfund](http://www.alumni.upenn.edu/pennfund)

Damon Cates, *Executive Director*



*Despite our best efforts, errors do sometimes occur. If your name was inadvertently omitted or misspelled, please let us know by calling Jean Findlay at 215-898-3647.*

## Fiscal Year 2007

Giving to The Penn Fund			Total Giving	
Year	Penn Fund Class Participation	Penn Fund Payments	Total Class Participation	Total Gifts & Pledges
1924	50.0%	\$1,000	100.00%	\$173,218
1925	0.0%	\$0	12.50%	\$17,171
1926	0.0%		0.00%	
1927	0.0%		0.00%	
1928	8.3%	\$100	41.67%	\$246,102
1929	13.0%	\$400	21.74%	\$1,073
1930	9.1%	\$5,500	40.91%	\$462,163
1931	16.7%	\$160	33.33%	\$305
1932	10.3%	\$4,199	34.48%	\$82,533
1933	11.5%	\$775	25.00%	\$11,510
1934	18.4%	\$2,700	46.05%	\$12,248
1935	22.1%	\$2,753	29.41%	\$17,145
1936	20.4%	\$12,025	47.31%	\$413,972
1937	21.3%	\$6,536	45.74%	\$62,116
1938	23.5%	\$10,405	46.32%	\$195,638
1939	25.0%	\$21,698	54.73%	\$184,186
1940	42.6%	\$35,957	61.03%	\$6,511,654
1941	42.6%	\$190,562	63.23%	\$5,536,103
1943	41.6%	\$204,581	63.73%	\$204,146
1944	35.2%	\$37,020	55.87%	\$548,150
1945	48.2%	\$28,476	76.47%	\$1,024,590
1946	40.1%	\$21,488	70.31%	\$282,224
1948	44.1%	\$49,721	66.73%	\$368,719
1949	41.1%	\$96,032	64.54%	\$140,554
1950	42.6%	\$118,243	62.46%	\$2,431,425
1951	42.0%	\$171,142	62.68%	\$271,774
1953	41.7%	\$170,597	64.06%	\$2,376,647
1954	39.7%	\$232,221	61.50%	\$4,857,204
1955	39.0%	\$511,813	56.80%	\$514,535
1956	43.4%	\$195,184	65.00%	\$2,806,178
1958	41.1%	\$118,616	61.63%	\$342,571
1959	39.7%	\$171,588	56.28%	\$9,884,997
1960	36.8%	\$112,556	51.13%	\$680,562
1961	35.6%	\$153,344	53.27%	\$2,706,878
1963	35.3%	\$177,707	54.03%	\$3,807,353
1964	37.8%	\$252,929	52.03%	\$1,590,951
1965	37.9%	\$268,818	52.55%	\$3,046,256
1966	38.1%	\$289,104	53.48%	\$3,918,146
1968	36.3%	\$276,263	52.29%	\$2,460,451
1969	35.8%	\$281,784	51.05%	\$2,420,439
1970	35.9%	\$444,735	48.74%	\$2,394,233
1971	35.6%	\$533,696	49.27%	\$1,100,986
1973	38.7%	\$332,998	53.01%	\$2,211,742
1974	35.8%	\$785,748	50.74%	\$3,969,068
1975	40.2%	\$853,126	51.36%	\$1,128,087

### Immediate Gift, Instant Impact

It takes just a few minutes to make a gift online. Doing so saves Penn processing costs and gives you an instant receipt. Log on to [www.alumni.upenn.edu/pennfund](http://www.alumni.upenn.edu/pennfund) and click on "Proud Penn Donor." Thank you!

Giving to The Penn Fund			Total Giving	
Year	Penn Fund Class Participation	Penn Fund Payments	Total Class Participation	Total Gifts & Pledges
1976	37.8%	\$976,562	49.70%	\$1,411,023
1978	39.3%	\$621,912	51.06%	\$1,520,661
1979	38.3%	\$1,211,445	51.87%	\$4,786,644
1980	40.9%	\$817,528	52.23%	\$1,200,409
1981	41.6%	\$1,025,735	52.82%	\$7,109,012
1983	23.2%	\$688,510	31.33%	\$4,053,351
1984	23.5%	\$952,877	29.44%	\$1,593,487
1985	21.9%	\$491,570	28.68%	\$797,304
1986	23.1%	\$891,975	29.62%	\$1,991,523
1988	19.2%	\$501,470	24.59%	\$1,284,863
1989	18.4%	\$283,888	24.64%	\$475,096
1990	18.1%	\$344,796	23.99%	\$313,609
1991	17.5%	\$364,413	23.62%	\$278,545
1993	17.1%	\$241,305	21.85%	\$215,456
1994	15.6%	\$208,216	20.57%	\$165,625
1995	14.8%	\$233,924	19.15%	\$141,322
1996	15.1%	\$230,313	19.01%	\$60,883
1998	14.1%	\$238,658	18.98%	\$155,914
1999	13.0%	\$120,726	18.81%	\$268,110
2000	16.5%	\$267,577	22.59%	\$301,455
2001	15.1%	\$100,555	19.63%	\$133,859
2003	18.6%	\$51,069	22.83%	\$240,919
2004	17.9%	\$42,564	22.20%	\$51,382
2005	20.4%	\$53,949	25.12%	\$19,465
2006	17.3%	\$26,157	23.52%	\$116,890

## 2007 Reunion Class Statistics

Giving to The Penn Fund			Total Giving	
Year	Penn Fund Class Participation	Penn Fund Payments	Total Class Participation	Total Gifts & Pledges
1942	35.4%	\$135,050	46.98%	\$2,548,332
1947	31.9%	\$191,125	43.01%	\$2,318,523
1952	32.4%	\$264,495	45.60%	\$2,919,700
1957	35.9%	\$798,404	46.19%	\$11,201,335
1962	32.2%	\$298,851	42.36%	\$2,969,205
1967	32.7%	\$756,360	39.77%	\$39,187,138
1972	31.4%	\$525,164	39.41%	\$5,018,462
1977	28.1%	\$767,390	34.21%	\$2,941,413
1982	44.9%	\$1,831,228	49.14%	\$12,685,212
1987	24.1%	\$918,325	29.45%	\$5,651,380
1992	22.3%	\$339,274	27.76%	\$1,312,779
1997	19.0%	\$334,064	24.31%	\$588,041
2002	24.2%	\$83,204	28.87%	\$247,857
2007	63.0%	\$63,999	63.0%	\$63,999