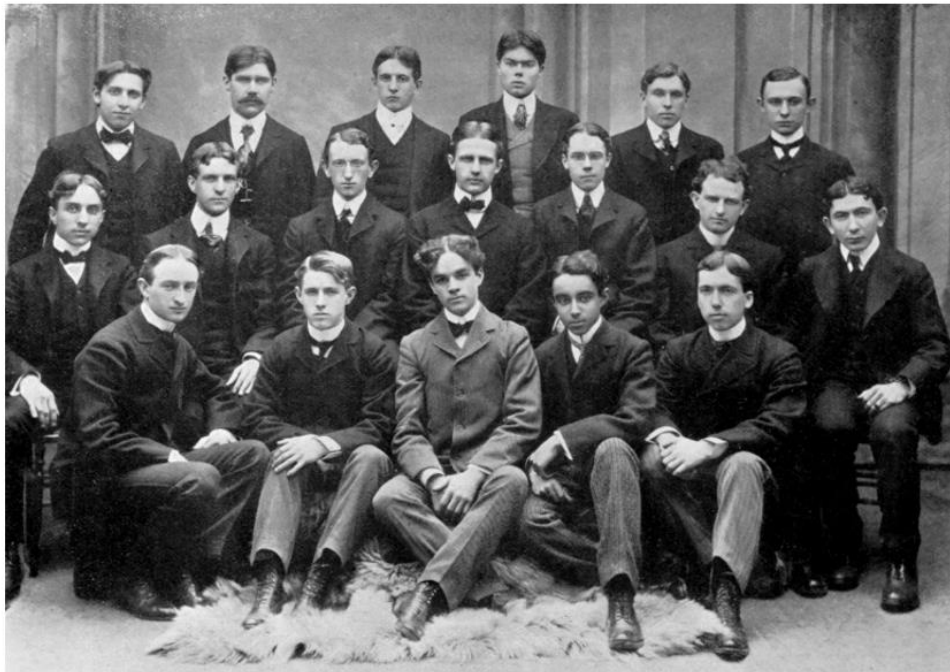




Julian Abele



Trumbauer and Abele



Architects in their youth: Abele (first row, fourth from left) and Magaziner (second row, far right) in a group portrait from the 1900 yearbook. (Image: Penn Archives)

Julian Abele contributed to the design of more than 400 buildings, including:



Irvine Auditorium



Eisenlohr hall



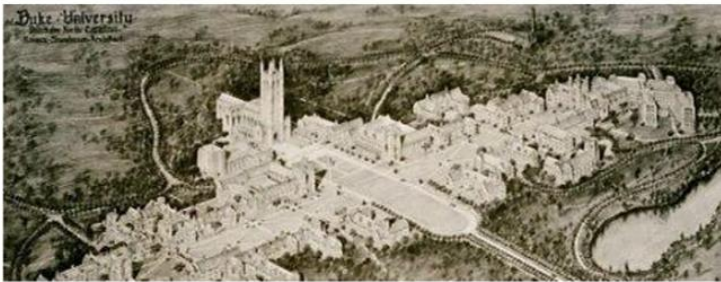
Philadelphia Museum of Art



Philadelphia Central Library



Widener Library at Harvard



Duke University West Campus



Duke Chapel

Read more about Julian Abele:

<https://thepenngazette.com/loyal-classmen/>

<https://www.design.upenn.edu/architecture/graduate/post/announcing-julian-abele-endowed-fellowship-fund>

<https://www.youtube.com/watch?v=DZ0f9dSLEUc>

On September 30, 2016, members of the Abele family and Duke University community gathered to recognize Julian Abele, the pioneering African-American architect who designed Duke's campus.

<https://www.monmouth.edu/news/third-julian-francis-abele-public-history-symposium-now-online/>

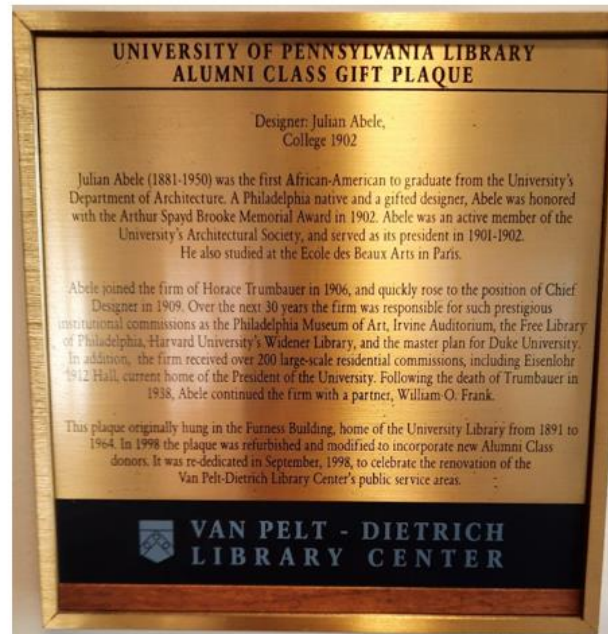
<https://library.duke.edu/rubenstein/uarchives/history/articles/abele>

https://www.philadelphiabuildings.org/pab/app/image_gallery.cfm/21458

<https://penntoday.upenn.edu/news/unbridled-brilliance-julian-abele>

<https://philly.curbed.com/maps/julian-abele-architecture-history-philadelphia>

<https://jbhe.com/2016/01/gate-on-haverford-college-campus-linked-to-black-architectural-pioneer-julian-abele/>



At Penn Black-Penn Day in 1982, together with Du Bois College House, Penn initiated a School of Design Fellowship in Abele's name as part of an effort to honor Abele appropriately, there was also mention of one of many design competitions Julian won as a student at Penn. Among those is The Pretty Memorial Alumni Award, a commendation tablet that hangs in the First Floor of Van Pelt Library.

**Read An Architect's legacy
From Diane McClure Holsenbeck**

[HERE](#)